

**BIG KIHEI MAUI COMMERCIAL LOT Zoned B-2, meter installed  
Valid SMA good until Feb. 2011 – READY TO BUILD**



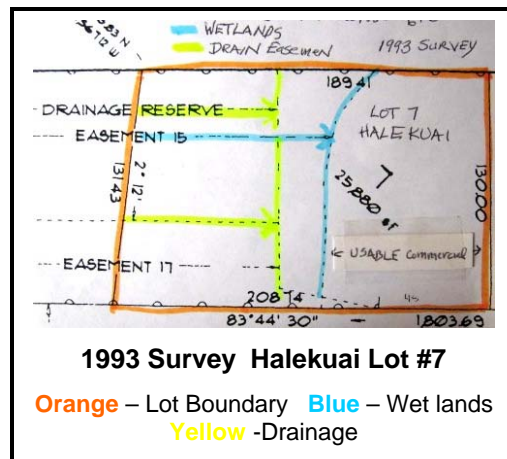
**Kihei Business Park, Halekuai Lot #7: TMK 2-3-9-51-7**

**FOR SALE:** 25,880 sf commercial lot zoned B-2 offered for sale. Of total area approx. 8,400+/- sf is suitable for commercial use, remainder is wetlands & drainage easement. Lot has protected view corridor and large buffer zone which guarantees no future neighbors. A great location in the heart of Kihei; one of the few vacant fee simple commercially zoned properties with 5/8" meter installed & ready to build. Business Park has County water & sewer and underground utilities. Preliminary plans included for a two story building, warehouse and parking. Present tenant on month to month lease.

**BRAND NEW 2 YEAR SMA EXTENSION.**

**3% commission.**

Commercial MLS #329966 Land MLS #330625 \$535,000 fee simple



**Susan Halas**

**Susan Halas (808) 244-7777 [susan@delmore.net](mailto:susan@delmore.net)**

Realtor – Broker

**Delmore Realty**

1877 Wili Pa Loop #2

Wailuku, Maui 96793

[www.delmore.net](http://www.delmore.net) for all Maui MLS listings