

For Lease – Warehouse/Retail/Office

## 296-312 ALAMAHA STREET

296-312 Alamaha Street, Kahului, Maui, HI 96732



### PROPERTY HIGHLIGHTS

296-312 Alamaha Street has 88,530 square feet of mixed-use buildings off busy Alamaha Ave. Prime street front retail space with optional adjoining warehouse next door to Ace Hardware. Up to approximately 13,750 contiguous warehouse space with dual sided 12foot doors. Flexible warehouse space configurations available with combinable yard space. Turnkey office space is also available. One of the few warehouse buildings with extra parking and yard space.

- 1,974 SF fenced yard space at \$.30 per SF which can be combined with adjacent warehouse spaces
- 1,332 SF street side retail spaces which can be combined to 2,664 SF \$2.25 psf/month NNN for retail
- Excellent parking for customers and employees throughout the property

### CONTACT

**Keoni Furse**, CCIM, R (PB)

keoni@kokuarealty.com

808.280.6556

**Eric Cuomo**, R (S)

eric@kokuarealty.com

808.298.8044

**Brian C. Rose**, R (S)

brian@kokuarealty.com

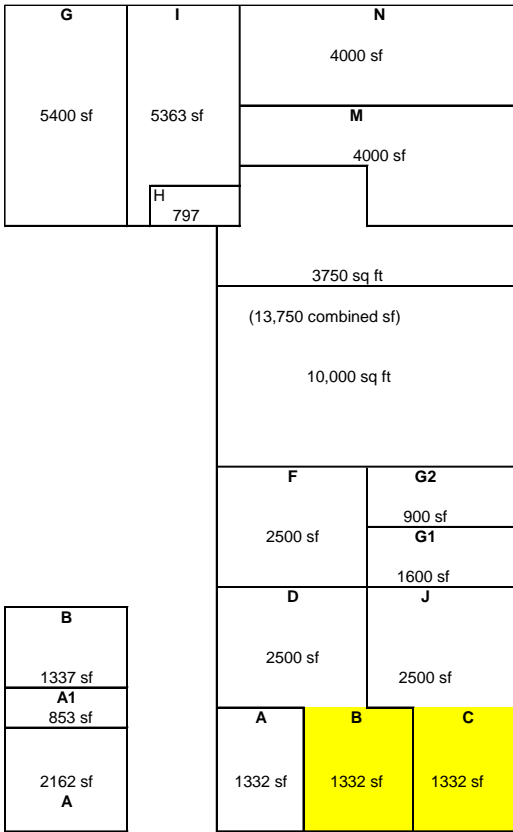
808.283.3492

This information supplied herein is from sources we deem reliable. It is provided without any representations, warranty, or guarantee, expressed or implied as to its accuracy. Prospective Buyer or Tenant should conduct an independent investigation and verification of all matters deemed to be material, including, but not limited to, statements of income and expenses. References to square footage are approximate. Terms of sale or lease and availability are subject to change or withdrawal without notice. CONSULT YOUR ATTORNEY, ACCOUNTANT, OR OTHER PROFESSIONAL ADVISOR.

For Lease – Warehouse/Retail/Office

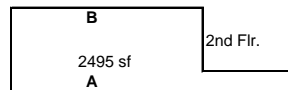
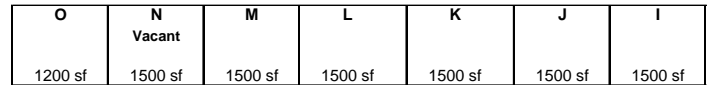
# 296-312 ALAMAHA STREET

296-312 Alamaha Street, Kahului, Maui, HI 96732

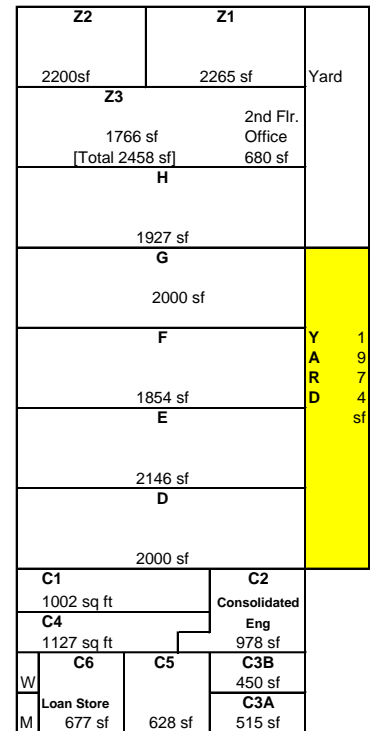


326 ALAMAHA

312 ALAMAHA



296 ALAMAHA



296 ALAMAHA

## EXHIBIT A

### CONTACT

**Keoni Furse**, CCIM, R (PB)  
keoni@kokuarealty.com  
808.280.6556

**Eric Cuomo**, R (S)  
eric@kokuarealty.com  
808.298.8044

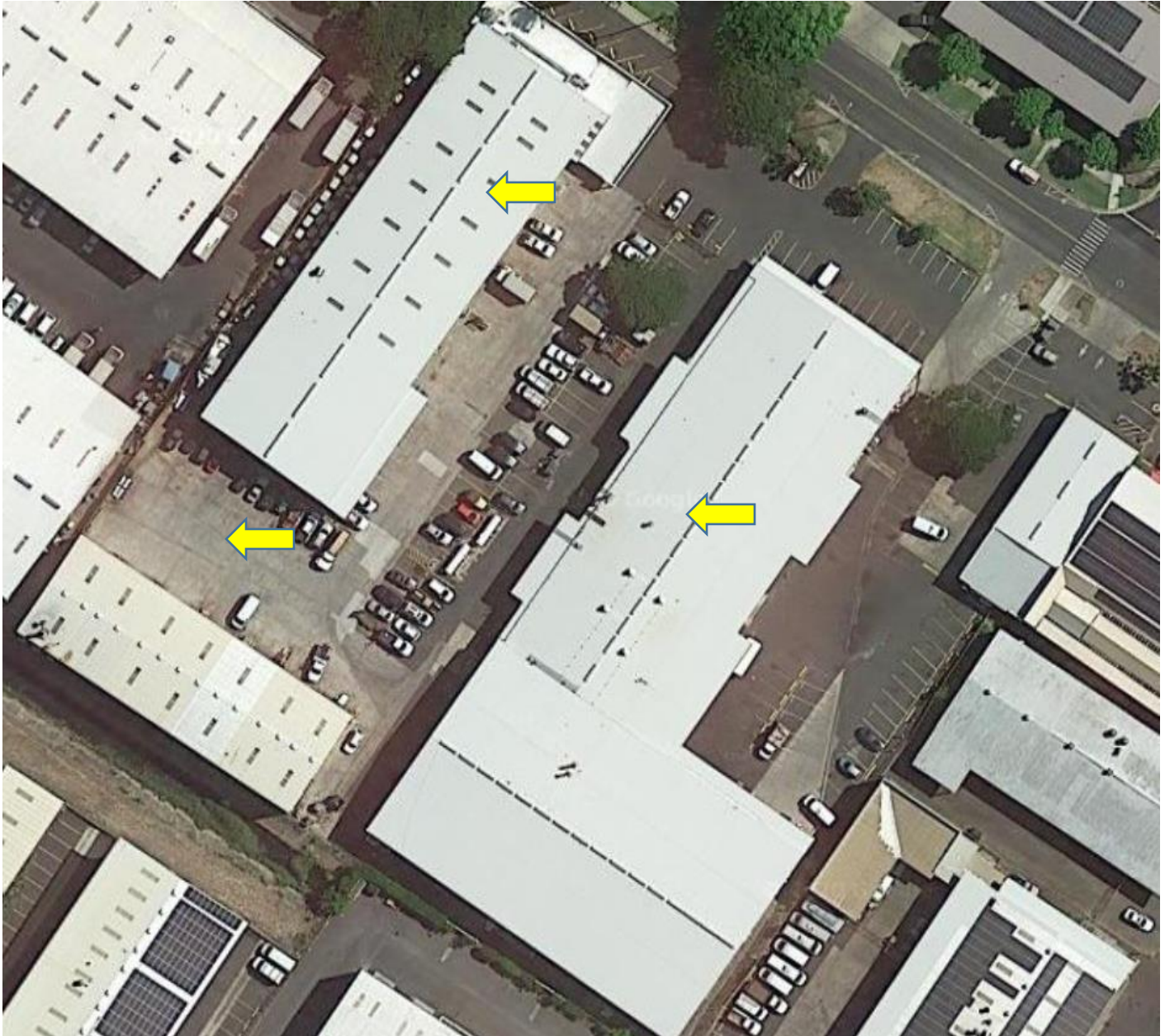
**Brian C. Rose**, R (S)  
brian@kokuarealty.com  
808.283.3492

This information supplied herein is from sources we deem reliable. It is provided without any representations, warranty, or guarantee, expressed or implied as to its accuracy. Prospective Buyer or Tenant should conduct an independent investigation and verification of all matters deemed to be material, including, but not limited to, statements of income and expenses. References to square footage are approximate. Terms of sale or lease and availability are subject to change or withdrawal without notice. CONSULT YOUR ATTORNEY, ACCOUNTANT, OR OTHER PROFESSIONAL ADVISOR.

For Lease – Warehouse/Retail/Office

# 296-312 ALAMAHA STREET

296-312 Alamaha Street, Kahului, Maui, HI 96732



## DEMOGRAPHICS

	1 Mile	3 Miles	5 Miles
<b>Total Population</b>	7,245	39,566	53,413
<b>Total Households</b>	1,979	11,595	15,946
<b>Average HH Income</b>	\$95,024	\$95,051	\$104,006

- *Demographic data derived from 2010 US Census*

This information supplied herein is from sources we deem reliable. It is provided without any representations, warranty, or guarantee, expressed, or implied as to its accuracy. Prospective Buyer or Tenant should conduct an independent investigation and verification of all matters deemed to be material, including, but not limited to, statements of income and expenses. References to square footage are approximate. Terms of sale or lease and availability are subject to change or withdrawal without notice. CONSULT YOUR ATTORNEY, ACCOUNTANT, OR OTHER PROFESSIONAL ADVISOR.