

AVAILABLE SPACES FOR LEASE

110 SF to 500 SF

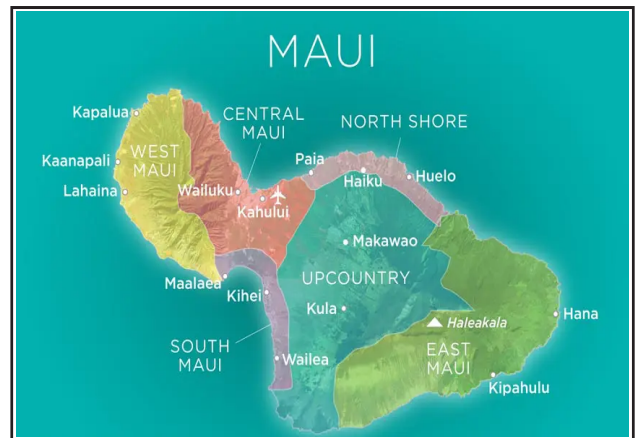


RENTAL RATES

- Base Rent: \$8.00 - \$9.00/SF per month
- Advertising/Marketing: \$75 per month
- Flexible terms available
- Est CAM (2024): \$3.16 /SF per month

PROPERTY FEATURES

- The center is comprised of over 50 retail shops & 14 restaurants/bars in the growing town of Kihei
- Tourist shopping destination
- On site storage facility (additional fee)
- On-site security team
- Great central location; Adjacent to Kihei's popular parks & beautiful beaches! Ten minutes from the major Wailea hotels.



DEMOGRAPHICS

Maui Island Population (2022 census)	154,100
South Kihei Population	27,921
Maui Households	57,355
Visitor arrival (2022)	2, 910,782

FOR MORE INFORMATION, CONTACT:

EVAN J. KETTER
(B) RB - 24112

OFFICE: (808) 879-5000

DIRECT: (808) 666-5398

CELL: (808) 421-9118

E-MAIL: EKETTER@MWGROUP.COM

The information contained herein comes from sources deemed to be reliable; however, no representation or warranty is made by MW Commercial Realty, Inc. and said information is subject to change without notice. No subagency offered.



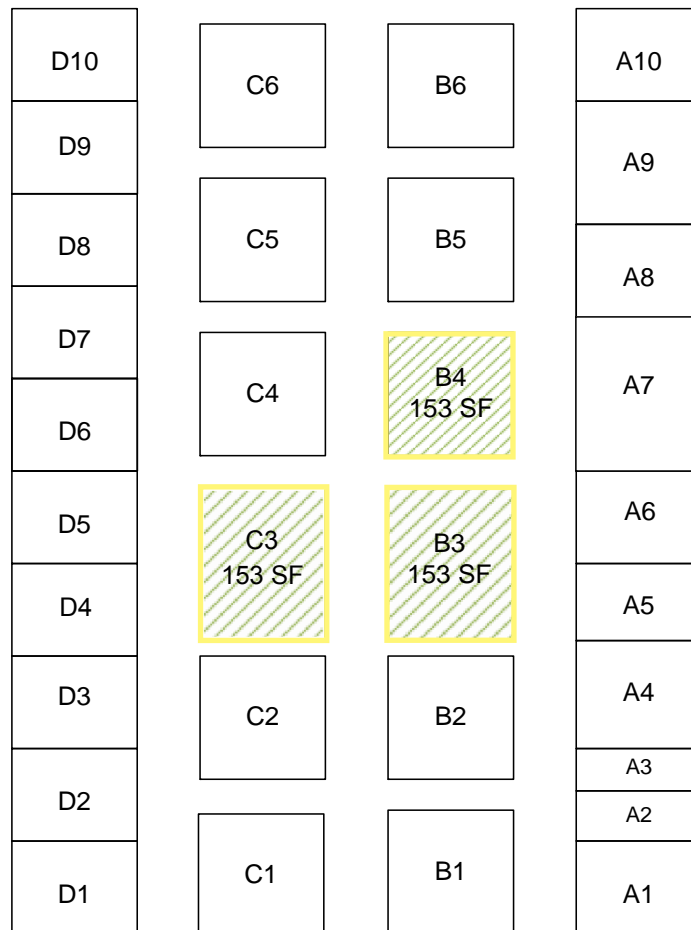
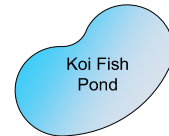
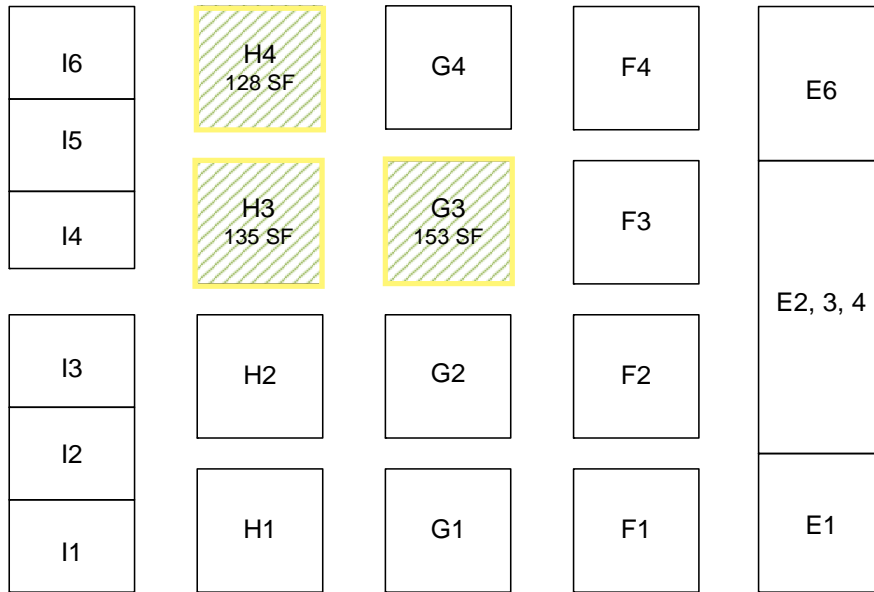
**MW Commercial
Realty, Inc.**
Real Estate Brokerage

1280 S. Kihei Road | Ste. 224 | Kihei, HI 96753
P: (808) 879-5000 | F: (808) 879-3999 | Corp. Lic. # RB-16265
www.mwcommercialistings.com

KIHEI KALAMA VILLAGE

1941 S. Kihei Rd., Kihei, HI 96753
 TMK: (2) 3-9-003-007

PAVILION MAP



The information contained herein comes from sources deemed to be reliable; however, no representation or warranty is made by MW Commercial Realty, Inc. and said information is subject to change without notice. No subagency offered.



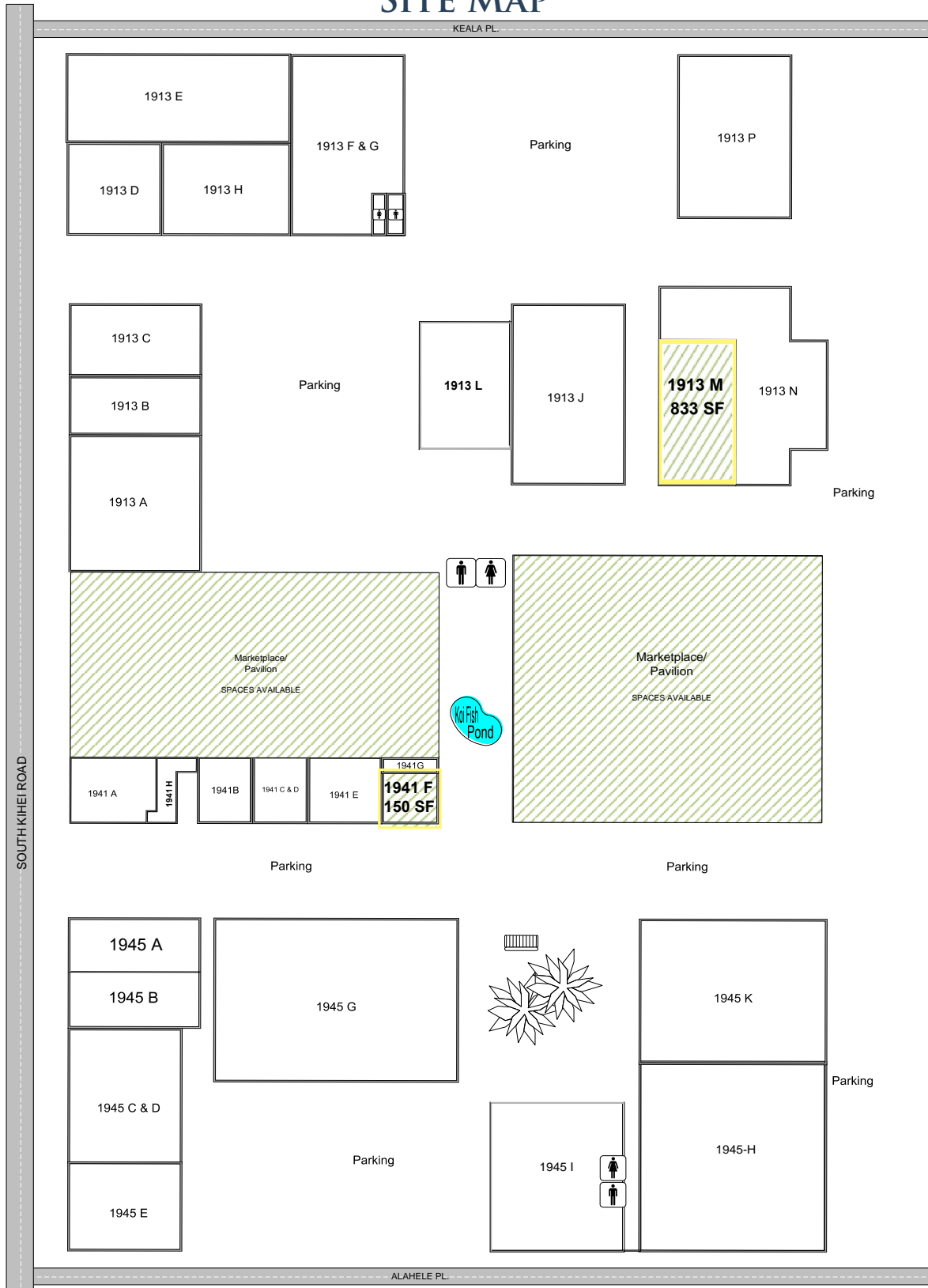
**MW Commercial
 Realty, Inc.**
 Real Estate Brokerage

1280 S. Kihei Road | Ste. 224 | Kihei, HI 96753
 P: (808) 879-5000 | F: (808) 879-3999 | Corp. Lic. # RB-16265
www.mwcommercialistings.com

KIHEI KALAMA VILLAGE

1941 S. Kihei Rd., Kihei, HI 96753
TMK: (2) 3-9-003-007

SITE MAP



The information contained herein comes from sources deemed to be reliable; however, no representation or warranty is made by MW Commercial Realty, Inc. and said information is subject to change without notice. No subagency offered.



**MW Commercial
Realty, Inc.**
Real Estate Brokerage

1280 S. Kihei Road | Ste. 224 | Kihei, HI 96753
P: (808) 879-5000 | F: (808) 879-3999 | Corp. Lic. # RB-16265
www.mwcommerciallistings.com

KIHEI KALAMA VILLAGE

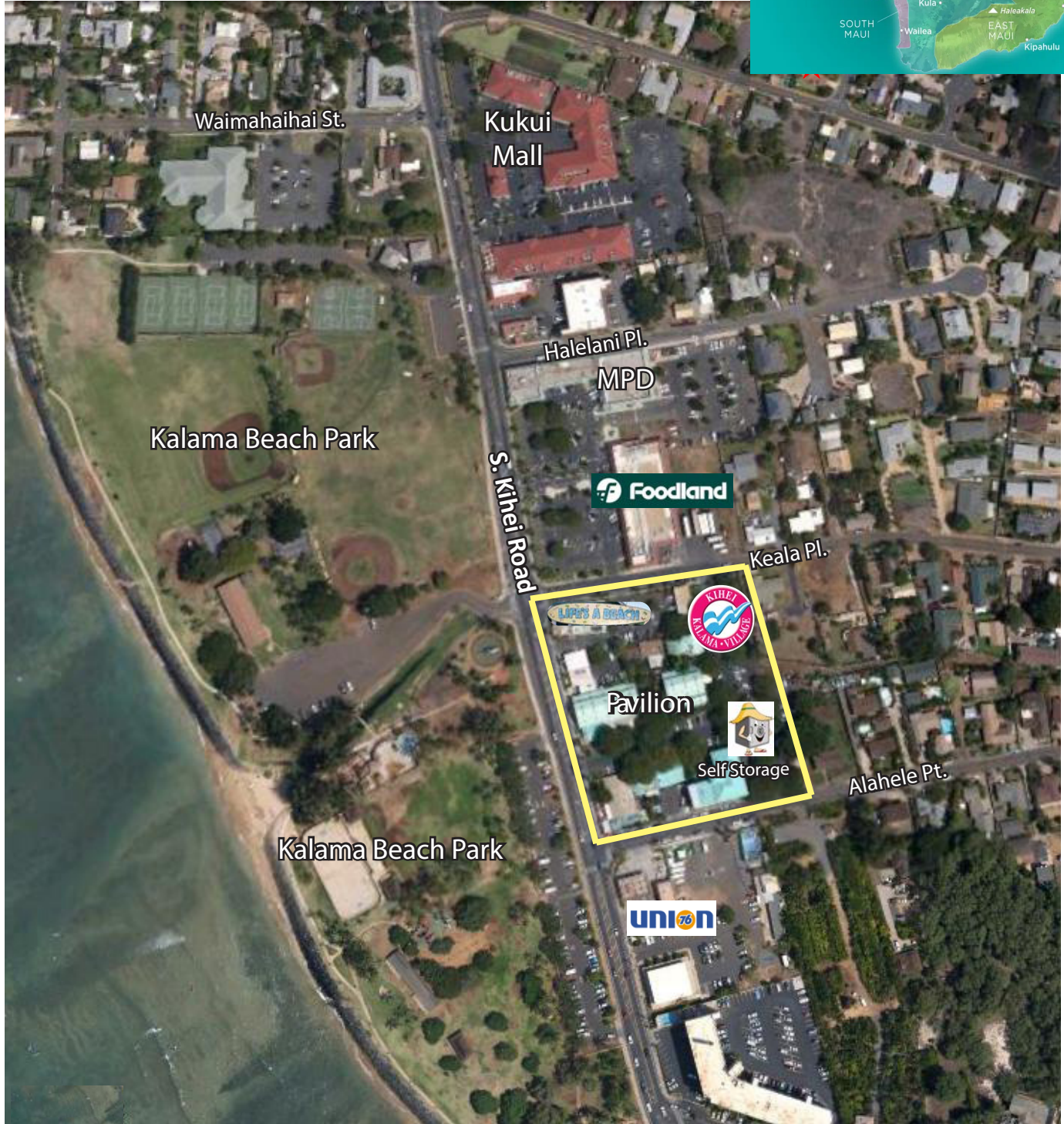
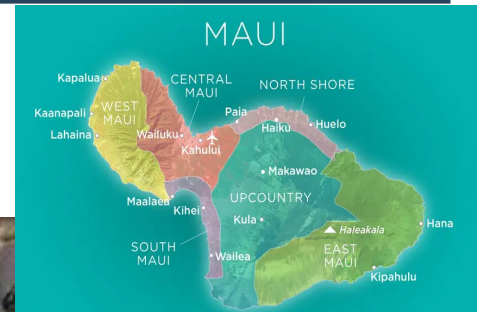
1941 S. Kihei Rd., Kihei, HI 96753

TMK: (2) 3-9-003-007

AREA MAP

Anchor Tenants include:

Kihei Cafe, Life's a Beach, and Three's Bar & Grill,
Coco Nene, and Kai Aloha



The information contained herein comes from sources deemed to be reliable; however, no representation or warranty is made by MW Commercial Realty, Inc. and said information is subject to change without notice. No subagency offered.



**MW Commercial
Realty, Inc.**
Real Estate Brokerage

1280 S. Kihei Road | Ste. 224 | Kihei, HI 96753
P: (808) 879-5000 | F: (808) 879-3999 | Corp. Lic. # RB-16265
www.mwcommercialrealty.com