

For Lease – Retail/Office

KAHULUI TOWN SQUARE

53 South Puunene Avenue, Kahului, Maui, HI 96732



PROPERTY HIGHLIGHTS

Kahului Town Square (formerly Maui Clinic Building) is a 17,000 SF multi-tenant retail/office building located adjacent to Maui Mall in the heart of Kahului. Tenants include Hawaii National Bank, Maui Clinic Pharmacy, Hair Salon, and other quality tenants. Leases are pending for over 50% of the building. Call for a tour today.

- 400 SF, 713 SF, 935 SF and 1,107 SF retail suites or professional office for lease. Suites 102, 103 and 104 can be combined for 2,042 SF, 1,820 SF or 2,755 SF of contiguous space.
- \$3.00 - \$3.50 psf/month, NNN (subject to tenant improvements)
- Prime Kahului location with visibility/signage on Puunene Avenue and facing Maui Mall.
- Excellent parking for customers and employees.
- Turnkey suites available – call for details.

CONTACT

Keoni Fursse, CCIM, R (PB)
keoni@kokuarealty.com
808.280.6556

Eric Cuomo, R (S)
eric@kokuarealty.com
808.298.8044

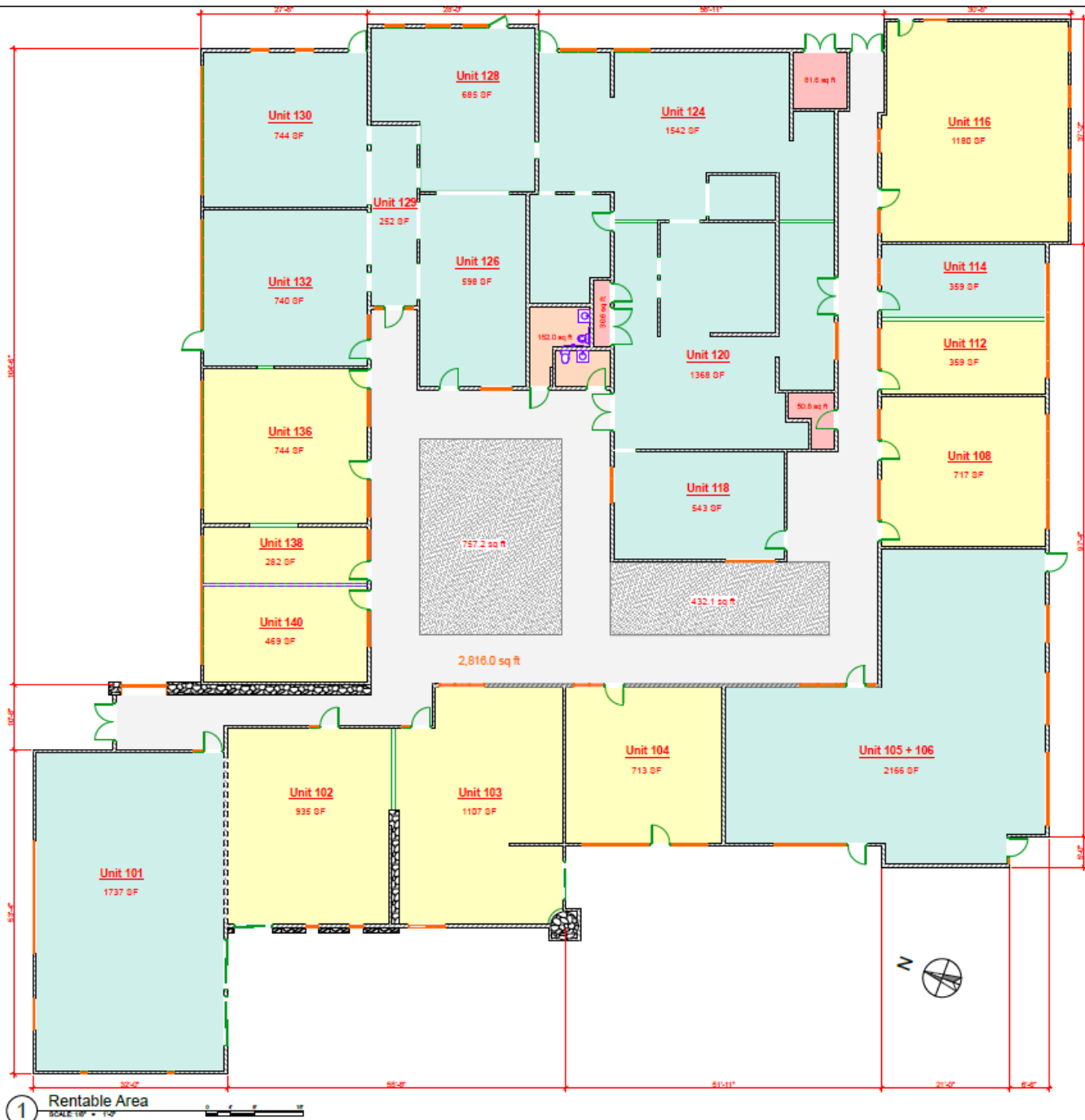
Brian C. Rose, R (S)
brian@kokuarealty.com
808.283.3492

This information supplied herein is from sources we deem reliable. It is provided without any representations, warranty, or guarantee, expressed or implied as to its accuracy. Prospective Buyer or Tenant should conduct an independent investigation and verification of all matters deemed to be material, including, but not limited to, statements of income and expenses. References to square footage are approximate. Terms of sale or lease and availability are subject to change or withdrawal without notice. CONSULT YOUR ATTORNEY, ACCOUNTANT, OR OTHER PROFESSIONAL ADVISOR.

For Lease – Retail/Office

KAHULUI TOWN SQUARE

53 South Puunene Avenue, Kahului, Maui, HI 96732



Revision	By

KASPRZYCKI DESIGNS, INC.
 Licensed Architect
 Office (808) 887-6110
 43 Puunene Rd, Suite 203, Kahului, HI 96731
 www.kasprycki.com

LICENSURE
 PROFESSIONAL ARCHITECT
 NO. 48-18158
 HAWAII, U.S.A.

THIS DOCUMENT PREPARED BY ME OR UNDER MY SUPERVISION AND CONTROL IN CONNECTION WITH THE PROJECT DESCRIBED HEREIN. I AM A LICENSED PROFESSIONAL ARCHITECT IN THE STATE OF HAWAII.

Signature

Kahului Town Square
 53 S. Puunene Ave., Kahului HI 96732
 TMK: (2) 3-7-009:012

Leasing Plan

Date: 5-5-2020
 Phase: Review Set
 Drawn: MB
 App: 20-KTS
 Sheet Number: A-3

Total Sheet Count: 10 Total Sheets

CONTACT

Keoni Fursse, CCIM, R (PB)
 keoni@kokuarealty.com
 808.280.6556

Eric Cuomo, R (S)
 eric@kokuarealty.com
 808.298.8044

Brian C. Rose, R (S)
 brian@kokuarealty.com
 808.283.3492

This information supplied herein is from sources we deem reliable. It is provided without any representations, warranty, or guarantee, expressed or implied as to its accuracy. Prospective Buyer or Tenant should conduct an independent investigation and verification of all matters deemed to be material, including, but not limited to, statements of income and expenses. References to square footage are approximate. Terms of sale or lease and availability are subject to change or withdrawal without notice. CONSULT YOUR ATTORNEY, ACCOUNTANT, OR OTHER PROFESSIONAL ADVISOR.

For Lease – Retail/Office

KAHULUI TOWN SQUARE

53 South Puunene Avenue, Kahului, Maui, HI 96732



DEMOGRAPHICS

	1 Mile	3 Miles	5 Miles
Total Population	9,269	46,994	53,947
Total Households	2,679	13,907	16,123
Average HH Income	\$83,466	\$99,432	\$104,183

- *Demographic data derived from 2010 US Census*

TRAFFIC COUNTS

Vehicles Per Day (2016) – Kaahumanu Avenue 30,000 VPD

This information supplied herein is from sources we deem reliable. It is provided without any representations, warranty, or guarantee, expressed or implied as to its accuracy. Prospective Buyer or Tenant should conduct an independent investigation and verification of all matters deemed to be material, including, but not limited to, statements of income and expenses. References to square footage are approximate. Terms of sale or lease and availability are subject to change or withdrawal without notice. CONSULT YOUR ATTORNEY, ACCOUNTANT, OR OTHER PROFESSIONAL ADVISOR.